

COMMUNITY ENGAGEMENT PLAN

BEFORE COMMUNITY MEETING

PROJECT WEBSITE: <https://cemenergy.ca/cem-energy-bolton-manor-farms/>

NAME: Bolton Manor Rural Power Resiliency Project

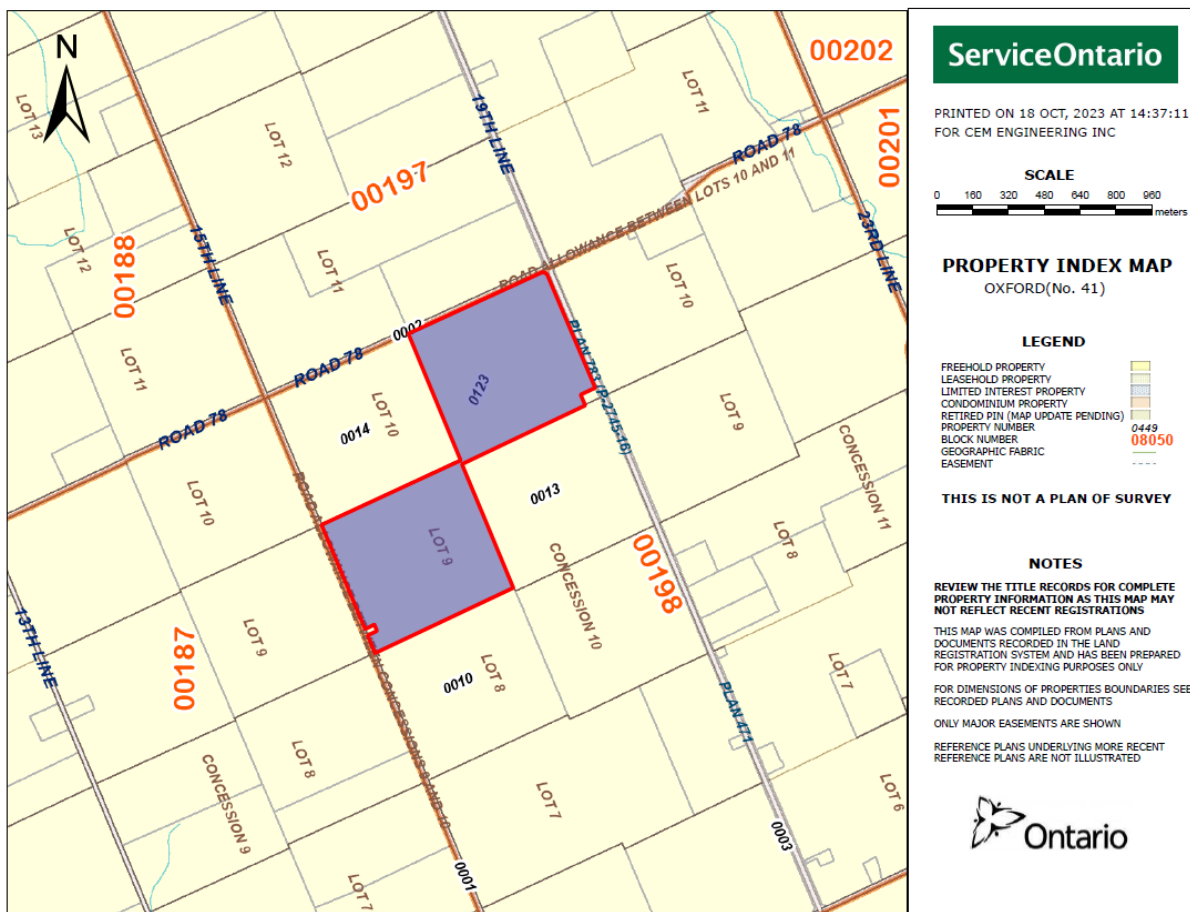
NAMEPLATE CAPACITY: 5 MW

TECHNOLOGY: Biogas-Fuelled Reciprocating Engine

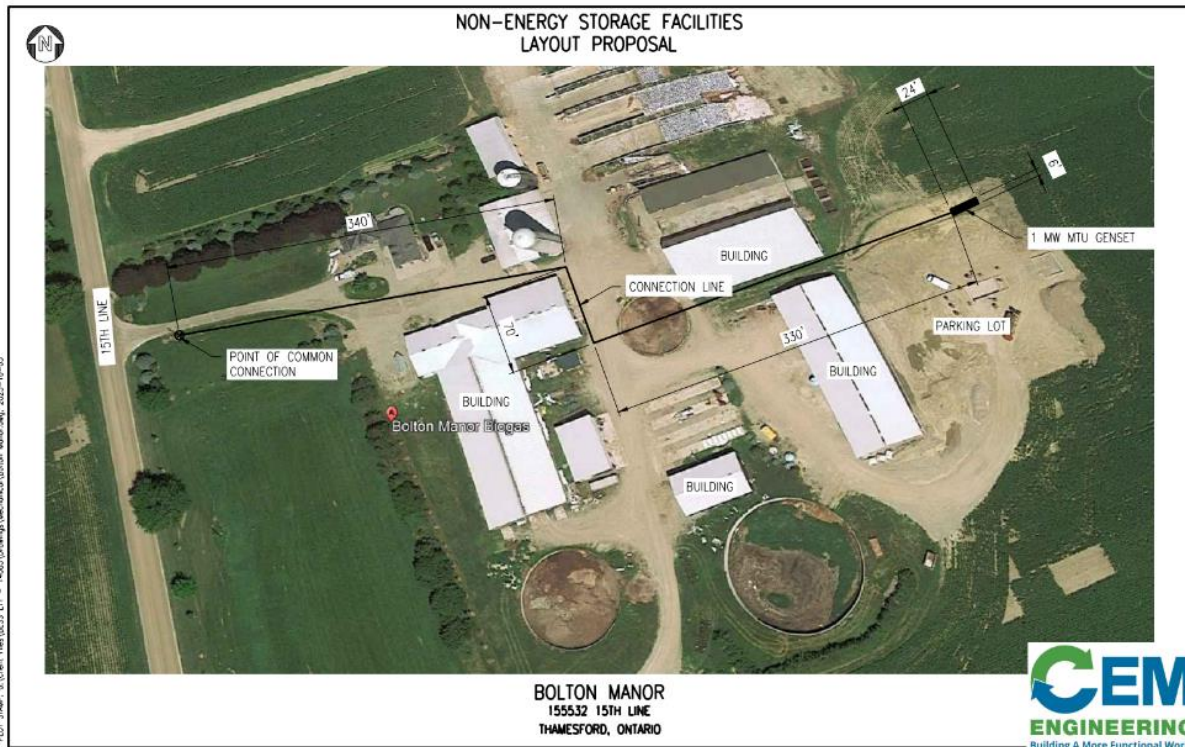
LEGAL NAME OF PROPONENT: Cogeneration and Energy Management Engineering Inc.
(DBA CEM Engineering)

CONTACT OF PROPONENT: Matt Lensink, P. Eng., Chief Executive Officer,
Email matt@cemeng.ca, Mobile 289-668-4364,
301 - 25 Corporate Parke Drive, St. Catharines, ON

SCALE MAP SHOWING THE BOUNDARIES OF THE PROJECT SITE, WITH LOCATION OF THE CONNECTION POINT AND THE CONNECTION LINE



COMMUNITY ENGAGEMENT PLAN



A DESCRIPTION OF PUBLIC ENGAGEMENT ACTIVITIES AND OPPORTUNITES

COMMUNITY MEETING: [Virtual Through MS Teams](#)

Meeting link: [Click here to join the meeting](#)

Meeting ID: 268 049 907 176

Passcode: 663nvn

Or call in (audio only) 289-273-8077

Phone Conference ID: 466 297 662#

NOTICE OF MEETING:

Wednesday November 22, 2023, 9:30am – 10:30am EST

POSTED AT LEAST 15 DAYS PRIOR

POST MEETING

Copy/Summary of minutes of public community meeting

Public community meeting is available to members of the public at large, collectively.

COMMUNITY ENGAGEMENT PLAN

The minutes must document that the public community meeting included:

- A description and display of the legal name and contact information of the Proponent
- The name, Nameplate capacity and generating or storage technology of the long-term reliability project
- A scale map showing the boundaries of the project site, location of the connection Point and approximate location of the connection line
- A Q & A opportunity where members of the public have an opportunity to ask questions to the Proponent in a manner accessible to all other members of the public attending the meeting